



**Residential
Corporate
Commercial
Educational
Parks &
Recreation
Controls
Municipal**



4341 County Road 113, Carbondale, CO 81623 | P: 970-948-2637

www.alpenglowinc.com



Alpenglow Lighting Design is dedicated to creating beautiful, sustainable lighting design.

Aaron J. Humphrey, LC, President

Aaron is nationally recognized as an expert in electric lighting, daylighting, lighting controls, and energy-efficient designs, and was a member of the first 'class' of designers to be Lighting Certified by the National Council for Qualification of the Lighting Profession in 1997. A consultant and designer since 1996, Aaron has worked on large scale commercial projects, including the Nike World Headquarters and the Brewery Blocks in Oregon, custom residences in western ski resorts, and has been instrumental in crafting dark-sky ordinances for municipalities. An award-winning designer, he has extensive experience in LEED-certified designs, local and national codes, and has taught classes in lighting and daylighting design.

Extensive Code Experience: LEED, IECC, ASHRAE/IESNA 90.1, California Title-24, Oregon Energy Code, Washington Energy Code, NEC.

Selected Awards:

Dark Sky, Aspen Recreation Center, Aspen, CO

IIDA Award of Merit, Washington State University Student Recreation Center, Interior Lighting

IIDA Award of Merit, Washington State University Student Recreation Center, Electric Power Research Institute (**Energy Savings**)

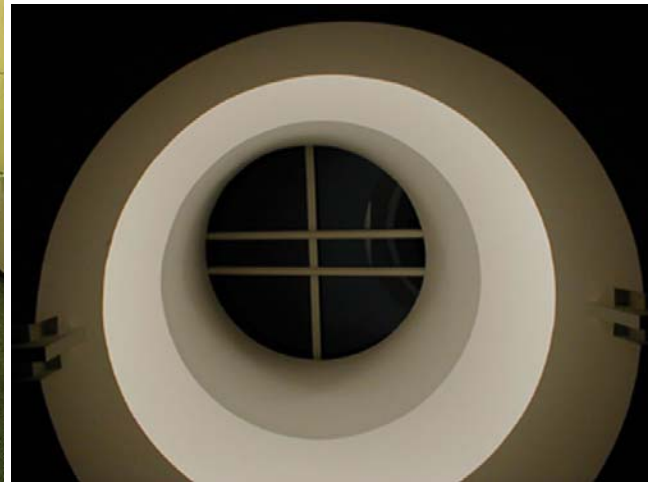
IIDA Award of Merit, Arch Cape Residence, Arch Cape, OR

IIDA Award of Merit, Millennium Plaza Park, Lake Oswego, OR

IIDA Award of Merit, Hillsboro Stadium, Hillsboro, OR

IIDA Award Of Merit, ACT III Theatres, Wilsonville, OR

Corporate



Nike World Headquarters, Tiger Woods Building 250,000ft² On-Campus Meeting Center

9 Configurable Meeting Rooms, Broadway-class 900 Seat Theatre, Open-plan Offices

Comprehensive Daylighting system minimizes electricity use, photocell and microprocessor-controlled and automated. Integrated Architectural and Theatrical Control systems, 9 DMX universes in one dimming system, divisible in 18 configurations.

Corporate



CNF Ad/Tech Center, Portland, Oregon

300,000ft² Daylit Office Building

Earth Advantage Award, 2000

4 Stories, open-plan office space with dimmable linear fluorescents. Oregon Energy Code allows 1.2W/ft², Final design was 0.8W/ft². Annual energy savings approximately \$65,000.

Comprehensive Daylighting system minimizes electricity use, photocell and microprocessor-controlled and automated. Waste heat from data center is used to heat the building.

Commercial



The Brewery Blocks, Portland, Oregon 1, 700,000ft² Urban Redevelopment

5 city blocks, with restaurants, offices, condos, stores, 4-level- 2-1/2 block underground parking, LEED Certified.

All Tenant Improvement spaces included dimmable fluorescent lighting. Parking Garage is lit with 100,000 hour lamps; estimated savings \$30,000 annually.

Educational

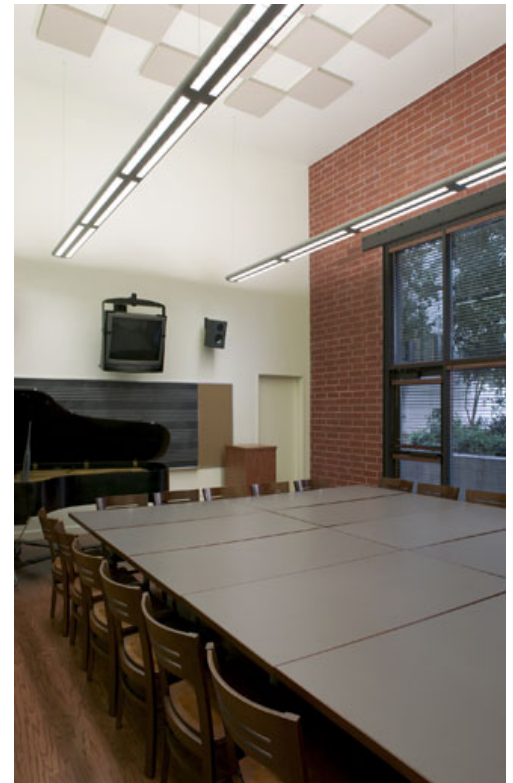


University of Idaho Student Commons Center

45,000 ft² Student Center, with daylit atrium, meeting rooms, offices, rehearsal spaces, cafeteria, kitchen, and study areas.

Daylighting control systems in 4 story atrium compensate for daylight penetration and reduce connected load.

Educational



Scripps College Garrison Theatre

Renovation of 1963 Greek Revival theatre, inclusion of 110-seat rehearsal room, main stage, seminar rooms, practice rooms, music library, offices.

Educational



University of Idaho College of Business and Economics

35,000 ft² Campus Center, with daylit passages, lecture halls, seminar rooms, meeting rooms, offices, and study areas.

Recreation Centers



Washington State University Student Recreation Center

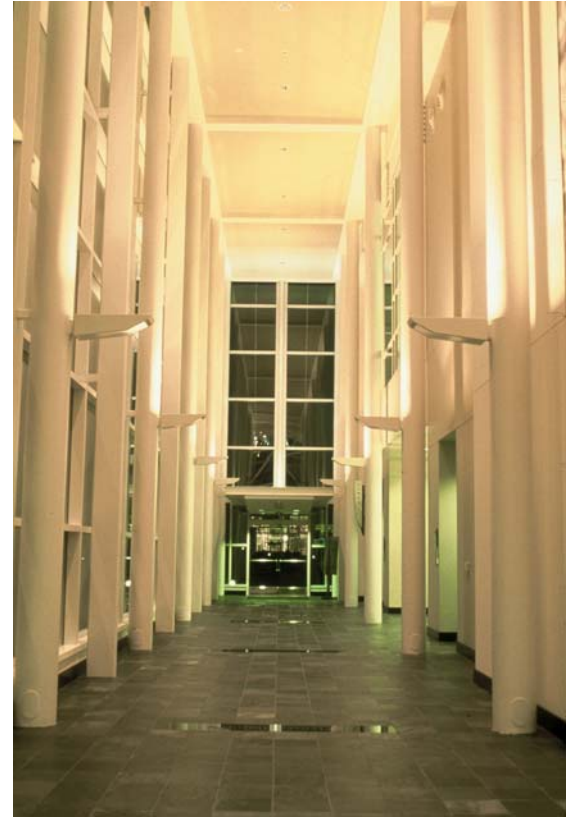
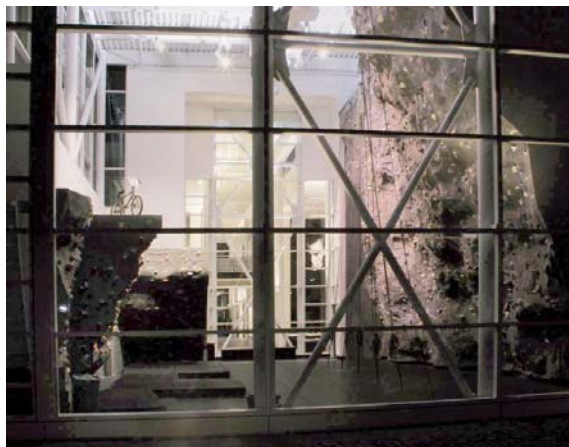
International Illumination Design Award, Interior Lighting, 2001

International Illumination Design Award, Energy Savings, 2001

Largest Recreation Center in Washington State (160,000 ft²), with Track, Natatorium, 4 Racquetball courts, 17,000ft² of basketball courts, 150 Workout Stations, Spa, 3 Multipurpose Studios.

Lighting includes photocell-controlled daylighting system, 25% below Washington State Energy Code, 10 distinct lamp types, microprocessor-based lighting control system.

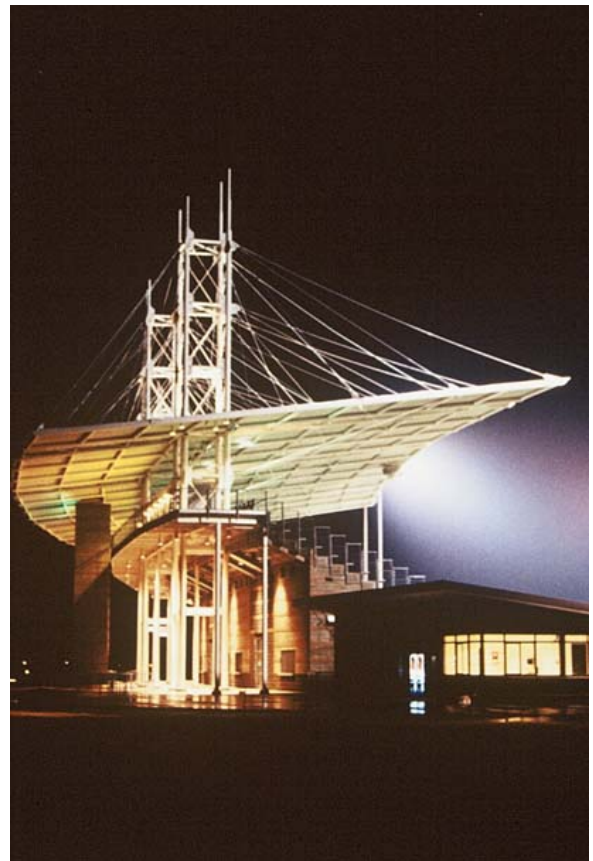
Recreation Centers



Nike World Headquarters, Lance Armstrong Recreation Building 130,000ft² On-Campus Recreation Center for Nike Employees

Natatorium, Weight Rooms, 40' and 20' Climbing Walls, Spinning Studios, Aerobics Studios, Locker Rooms, Saunas, Spas, Offices, Meeting Rooms.
Comprehensive Daylighting system minimizes electricity use, photocell and microprocessor-controlled and automated.

Recreation Centers



Hillsboro Stadium

International Illumination Design Award, 2001

Multi-sport Stadium

4,000 seat Stadium, with Weight Rooms, Locker Rooms Offices, Meeting Rooms.
Largest artificial turf fields in the US, photocell- controlled lighting, 6 lamp types for ease of maintenance.

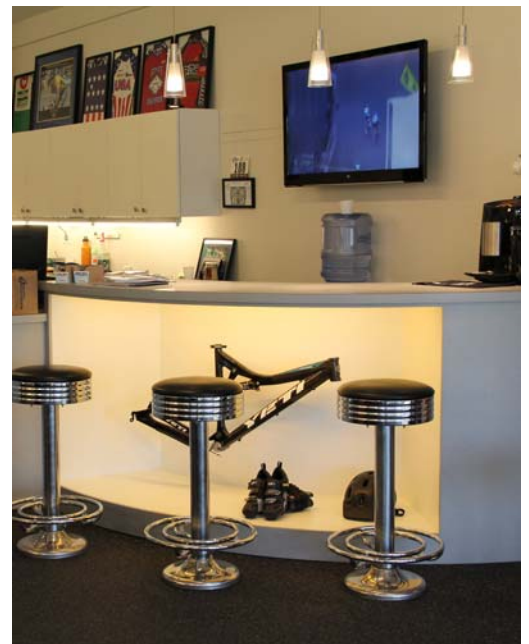
Recreation Centers



Aspen Recreation Center Dark Sky Award, 2004

City-owned recreation center, with Natatorium, Weight Rooms, Climbing Tower, Youth Center, Ice Rink, Locker Rooms, Saunas, Spas, Offices, Meeting Rooms.

Retail



ProBike Tucson, AZ

Alpenglow designed lighting, interiors, casework, and audio-visual for a customer-service oriented bicycle shop in Tucson, Arizona. High-efficiency LEDs and linear fluorescents create an exciting and interesting shopping experience.

Restaurants



Kenichi
Aspen, CO

Popular sushi restaurant in Aspen's downtown core. The first all-LED dining room in Aspen.

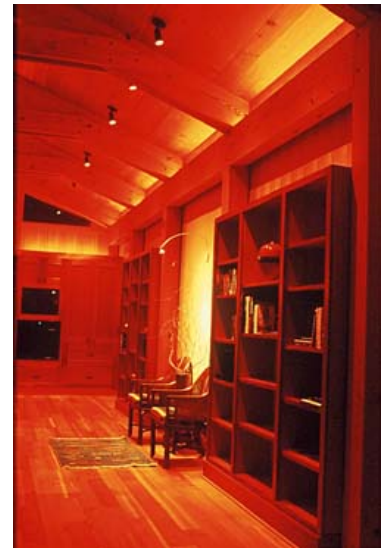
Energy Retrofits



Aspen Historical Society Aspen, CO

Replaced 50W MR-16 Halogen lamps with 9W LED lamps, reducing energy consumption by nearly 80%. Client saw significant reduction in energy and relamping expenses.

Residential



Arch Cape Residence
Custom Residence, Arch Cape, Oregon

International Illumination Design Award Winner, 2001

Custom residence built of reclaimed fir. Included lighting control system, custom fixtures.



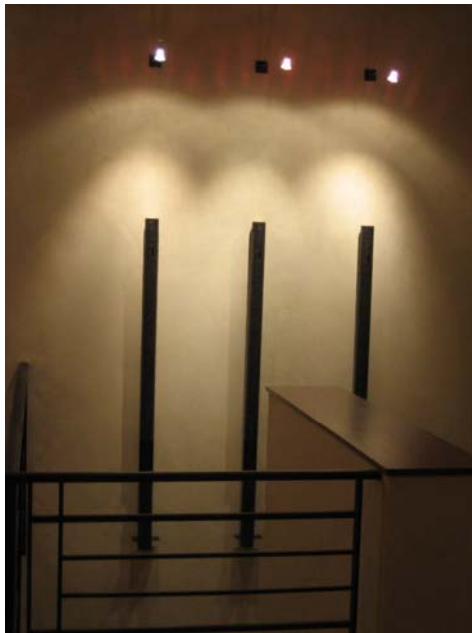
Residential



Delores Street Lofts, Carbondale, Colorado

Multi-family LEED-Certified mixed-use residential & retail spaces located in one of National Geographic Explorer's Top Places To Live.

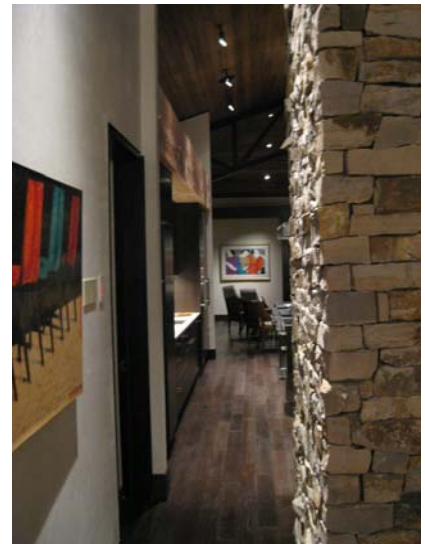
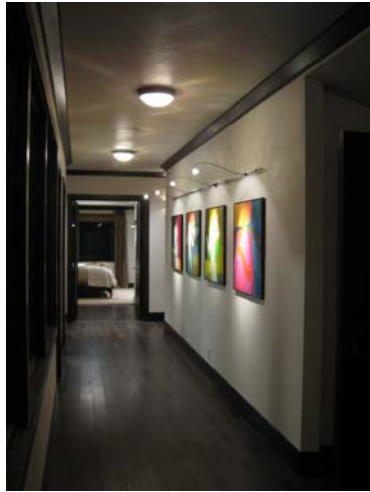
Residential



Private Residence, Aspen, Colorado

Custom residence in America's premier ski resort. Extensive art collection required careful planning and coordination. Lighting control system integrated with HVAC, A/V, and security.

Residential



Private Residence, Aspen, Colorado

Custom residence at the base of Aspen Highlands. Easy-to-use lighting control system is integrated with shades, windows, HVAC, A/V, and security and uses iPhones and iPads for additional control.

Residential



Private Residence, Woody Creek, Colorado

Custom glass and iron pendants and sconces are lit with LEDs. Steplights and similar details are coordinated carefully with architectural details. Lighting control system integrated with HVAC, A/V, and security.

Residential



Private Residence, Cornelius, Oregon

Custom residence, with lighting control system, low-power design capable of operating on self-contained solar system, color-changing cove with 16,000,000 colors, custom skylights.

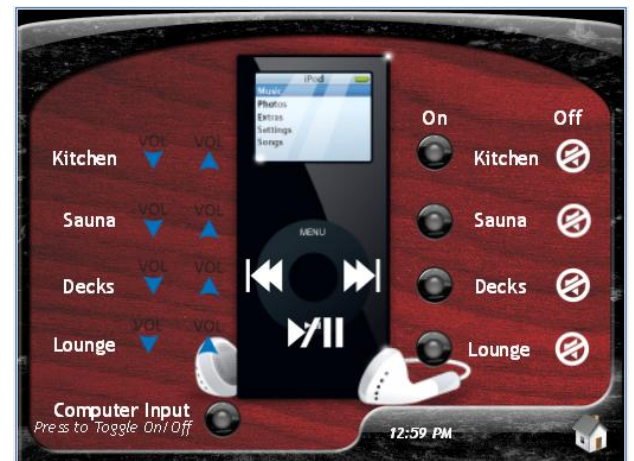
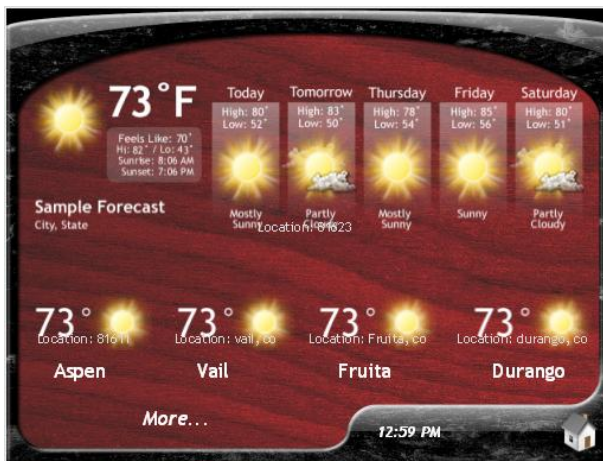
City Parks



Millennium Plaza Park, Lake Oswego, Oregon **International Illumination Design Award, 2000**

City Park with multi-use plaza, Pergola structure for picnics, meetings, concerts. Lighting is photocell and microprocessor-controlled and automated. Vandal-resistant custom lighting fixtures.

Lighting Controls



Lighting Controls are limited only by imagination and creativity. They are capable of controlling lights, HVAC, audio/visual systems, shading, motorized windows, garage doors, and more.

Good systems are defined by ease of use, and Alpenglow's designers are experts at making simple, functional, powerful control systems for commercial and residential customers.



3D Digital Modeling, Rendering, and Analysis

3D Electric and Daylighting analysis, walk-throughs, and calculations.

Light Level Calculations

Interior and exterior Point-by-Point calculations and lighting analysis.

Municipal Lighting Ordinances

Creation of easy-to-use and understand Lighting Ordinances for Cities, Towns, and Counties.

Daylighting Design

Skylight, Clerestory, and Shading design, including LEED compliance.

Electrical Permit Documents

Assistance in calculations and submittals of data to show compliance with IECC, LEED, and Lighting Ordinances.

Lighting Energy Audits

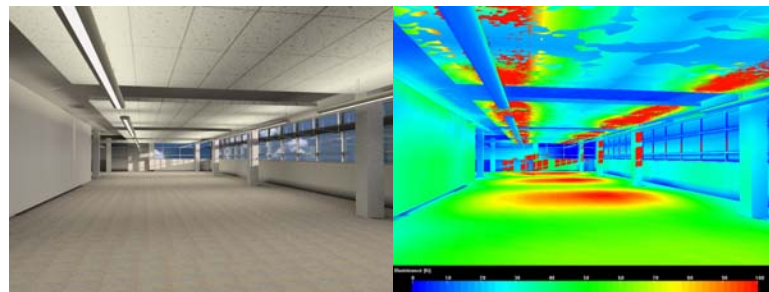
Surveys and audits of existing lighting systems and recommendations for improvements.

Lighting Materials Purchasing Assistance

Assistance in product management and coordination to the jobsite

Dimming System Audits and Reprogramming

Updating existing system hardware and software



Daylighting Digital Model and Light Level Study

Selected Projects



Educational:

Stanford University Medical Center, Palo Alto, CA
 Scripps College Garrison Theatre, Claremont, CA
 Portland Community College Café, Portland, OR
 Washington State University Student Recreation Center, Pullman, WA
 University of Idaho College of Business and Economics, Moscow, ID
 University of Idaho Commons, Moscow, ID

Parks & Recreation:

Carbondale Ball Fields, Carbondale, CO
 PALA Youth Center, San Jose, CA
 Millennium Plaza Park, Lake Oswego, OR
 Pioneer Courthouse Square, Portland, OR
 Hillsboro Stadium, Hillsboro, OR
 Oregon Gardens, Silverton, OR
 Public Sculpture, Culver City, CA

Institutional / Municipal:

Garfield County Public Libraries, New Castle Branch, New Castle, CO
 Basalt Lighting Ordinance, Basalt, Colorado
 Carbondale Lighting Ordinance, Carbondale, CO
 Glenwood Springs Lighting Ordinance, Glenwood Springs, CO
 Willamette Light Brigade / Portland Bridge Lighting, Technical Advisor
 Union Station Pedestrian Bridge, Portland, OR
 State of Oregon North Mall Office Building, Salem, OR
 Multnomah County Correctional Facility, Portland, OR
 Columbia River History, Science, and Technology Museum, Richland, WA
 1900 SW 4th Ave 1% for Art Sculpture, Portland, OR

Commercial:

1st Bank, Glenwood Springs, CO
 Valley Fine Art, Aspen, CO
 Roaring Fork Family Practitioners, Carbondale, CO
 Kenichi, Aspen, CO
 212 Gallery, Aspen, CO
 Willits General Store, Bank Building, Whole Foods, roadways, Basalt, CO
 Alpine Bank, Glenwood Springs, CO
 Community Bank, Basalt, CO
 Vectra Bank, Aspen, CO
 Aspen Pedestrian Mall, Aspen, CO
 Glenwood Tramway, Glenwood Springs, CO
 Brewery Blocks, Portland, OR
 Nike World Campus North Expansion, Buildings "Lance Armstrong" and "Tiger Woods" Portland, OR
 CNF Transportation, Portland, OR (published in *Lighting Design & Application*, July 2001)
 Fox Tower, Portland, OR, core & shell, various tenant improvements
 1201 NW Front Ave, Portland, OR
 ACT III Movie Theatres: Portland, OR (2); Vancouver, WA (2); Lincoln City, OR; St. Louis, MO; Hillsboro, OR; Wilsonville, OR; Renton, WA
 Il Fornaio Restaurants, San Francisco, CA, Portland, OR, Las Vegas, NV, Beijing, China, San Jose, CA
 Transworld Properties, Portland, OR
 Killian Pacific, Vancouver, WA

Worship:

Grace Church, Emma, Colorado
 St. Stephens Catholic Church, Glenwood Springs, CO
 St. Luke Catholic Church, Woodburn, OR
 Lake Grove Presbyterian Church, Lake Oswego, OR

Residential:

Over 100 private residences in Vienna, Austria, Aspen, Vail, Beaver Creek, Telluride, Durango, Steamboat Springs, Jackson Hole, Sun Valley, Washington State, and Oregon.